

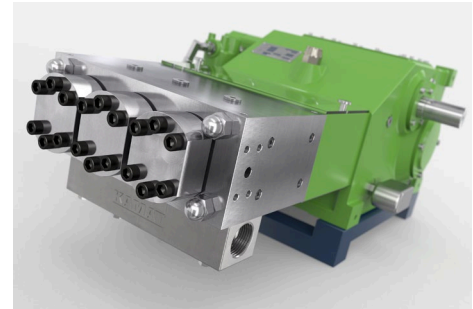
三柱塞泵 K10000 – 3G

P 15-1

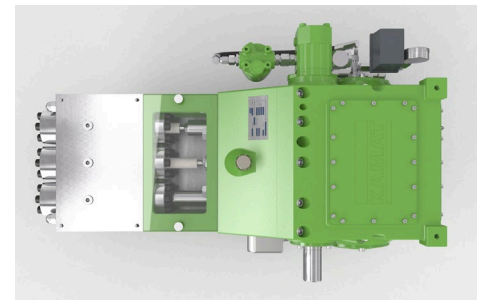
Triplex Plunger Pump

31.07.2019

- 流量基于100%的容积效率和20°C的环境温度
- 最小入口压力取决于流体介质
- 速度范围10-100%取决于连杆力
- 动态平衡齿轮
- 齿轮强制润滑 (> 110 kW, 带油冷却器)
- 标准减速比
i = 3,00 - 3,14 - 3,39 - 3,76 - 4,13 - 4,50 - 4,93
- 适用API 674标准
- 根据要求, 可以使用特殊介质, 例如海水, 乙二醇, 甲醇, 油等



- Flow rate is based on 100% volumetric efficiency and 20°C ambient temperature
- min. inlet pressure depending on fluid medium
- Speed range 10-100% depending on rod force
- Gear dynamically balanced
- Gear with force-fed lubrication (> 110 kW with oil cooler)
- Standard gear ratios
i = 3,00 - 3,14 - 3,39 - 3,76 - 4,13 - 4,50 - 4,93
- Also available to API 674
Special medium such as sea water, glycol, methanol, oils, etc. on request



n _{nom} = 500 1/min		p max. bar @ kW				Kopftyp / Head type		
Typ / Type	l/min	90 kW	110 kW	132 kW	160 kW	A	M	MC
K 10012 – 3G	16	3000	3500	-----	-----	1		
K 10014 – 3G	22	2175	2660	3200	3500	1		
K 10016 – 3G	29	1670	2035	2440	2950	1		
K 10018 – 3G	36	1315	1610	1930	2340	1		
K 10020 – 3G	45	1070	1300	1565	1900	1		
K 10022 – 3G	54	880	1080	1300	1570	1		
K 10024 – 3G	64	740	905	1090	1315	1		
K 10026 – 3G	76	630	770	925	1120	1		H
K 10028 – 3G	88	545	665	800	970	1		H
K 10030 – 3G	101	475	580	700	840	1		H
K 10032 – 3G	115	415	510	610	740	1		H
K 10036 – 3G	145	330	400	485	585	1	1	H
K 10040 – 3G	179	270	330	390	475		1	1
K 10045 – 3G	227	210	260	310	375		1	1
K 10050 – 3G	280	170	210	250	305		1	1
K 10055 – 3G	338	140	170	210	250		1	1
K 10060 – 3G	403	120	145	175	210		1	1
K 10065 – 3G	473	100	125	150	180			1

API 674 = max. 360 1/min

= Ultra High Pressure UHP

尺寸图 K 10000 - 3G

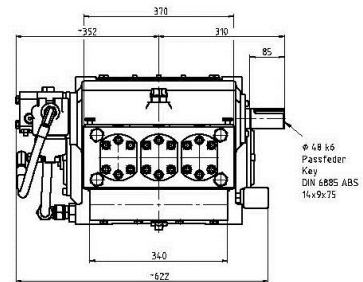
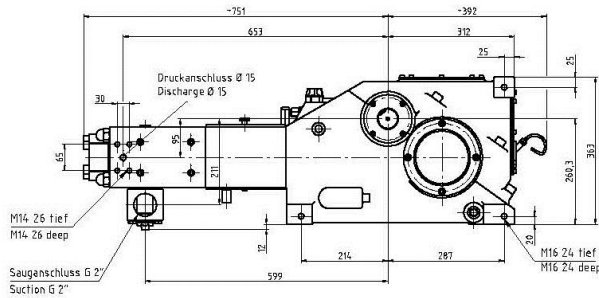
Dimension drawing

~ 440 kg

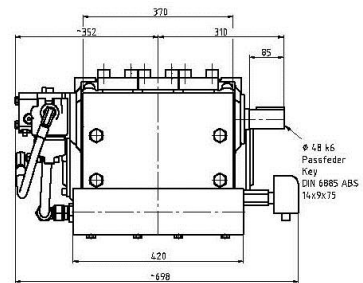
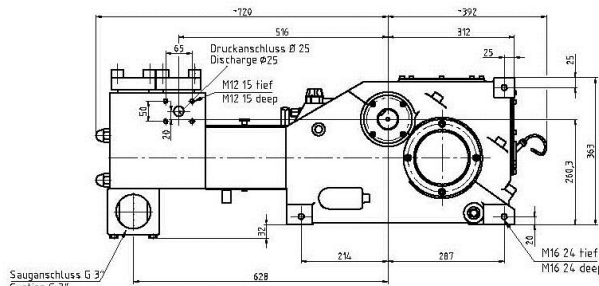
P 15-2

01.05.2017

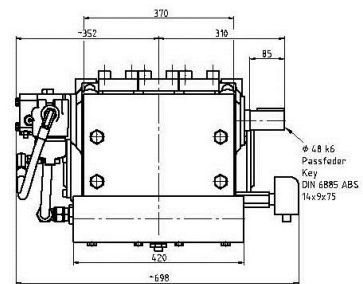
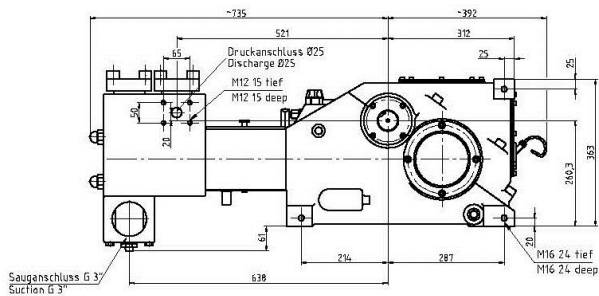
Typ A
Type A



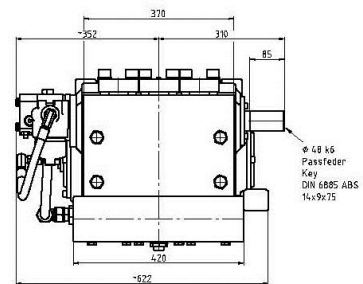
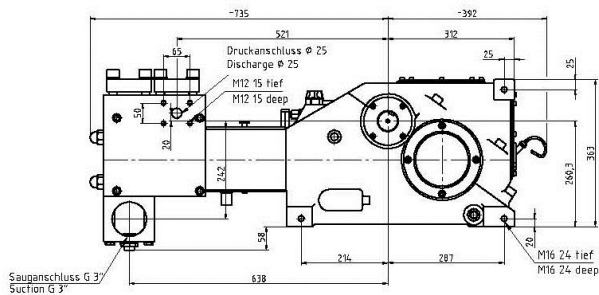
Typ M
Type M



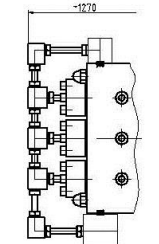
Typ MC
Type MC



Typ MCH
Type MCH



Typ A
Type A
 ≈ 1500 bar



Höchstdruckkopf ≈ 1500 bar
High Pressure Head ≈ 1500 bar

Fußmaßzeichnung
Footprint

